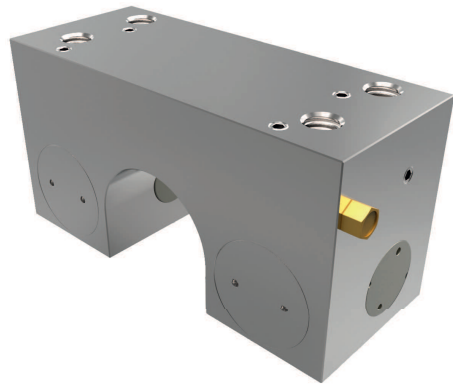


CLAMPING ELEMENTS SERIES MKR

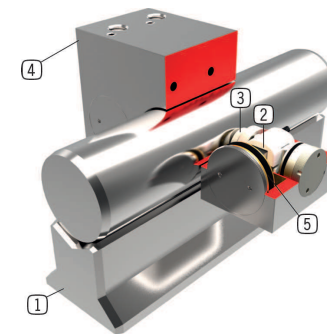
▶ PRODUCT ADVANTAGES

- ▶ **Independent of the manufacturer**
For circular guides and shaft guides
- ▶ **Energize to close (NO)**
Closing with pressure
- ▶ **high durability**
Up to 5 million static clamping cycles



▶ TECHNICAL DETAILS

- ① **Circular guide**
- Compatible with circular and shaft guides
- ② **Wedge-type gear**
- Power transmission between piston and clamping jaw
- ③ **Clamping jaw**
- Pressed at the circular guide
- ④ **housing**
- chemically nickel plated steel
- ⑤ **Pneumatic piston**
- The piston moves the wedge-type gear longitudinally



▶ INFORMATION ON THE PRODUCTS

APPLICATION SCENARIOS

- ▶ **Fixing of vertical axes**
- ▶ **Positioning of lifting devices**
- ▶ **Clamping of machine tables**

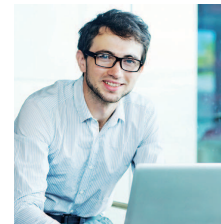
FURTHER INFORMATION

- ▶ **Special variants on request, e.g.**
With proximity switch monitoring
With additional air connection (from above, from the front)

▶ INFORMATION ON THE SERIES

TECHNICAL DATA

incident wave quantity	12-60 mm
Holding force	650-2000
pressure min.	3
pressure max.	6
Spring-loaded energy storage	inexistent
PLUS connection	no
Clamping cycles	up to 5 million
Braking cycles	not suitable
Operation	pneumatic



▶ Technical Information

All information just a click away at: www.zimmer-group.de
Find data, illustrations, 3D models and operating instructions for your installation size using the order number for your desired product.
Quick, clear and always current.